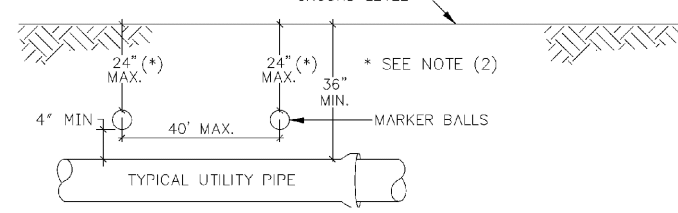


NOTES:  
WHEN CONDITIONS PERMIT, PIPE DEFLECTION MAY BE USED INSTEAD OF BRIDS TO OBTAIN THE MINIMUM CLEARANCE. FACTORY OFFSETS MAY BE USED.

TYPICAL CONFLICT DETAIL

ENGINEERING STANDARDS 2022			
REVISIONS	BY	DATE	DESCRIPTION
BY DATE	ENGINEERING DIVISION		TYPICAL CONFLICT (SEWER)
S.S. JUNE 2022	CITY OF POMPAÑO BEACH		
S.S. 06/23/22			
SCALE: N.T.S.		DATE: JUNE 2022	DWG. NO. 206-1

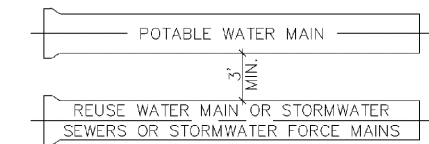


GENERAL NOTES:

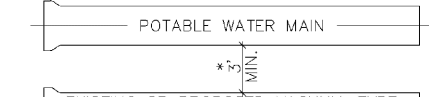
- ALL UTILITY PIPE SHALL BE INSTALLED WITH 4" MARKER BALLS PLACED EVERY 40' AND A LIGHT FITTING FOR IDENTIFICATION AND MARKING PURPOSES. BUILT UP 2000 LBS. PIPE AT A MINIMUM DUTY OF 24 INCHES OR AS APPROVED BY THE OWNER. IT SHALL BE COLOR CODED AND MARKED AS FOLLOWS:  
SEWER SYSTEM  
A. COLOR: GREEN  
B. FITTING: SANITARY SEWER  
C. FREQUENCY OF MARKER BALLS SHALL BE 121.6 KHZ.  
D. THE MARKER BALLS CAN BE BORED IN ANY ORIENTATION.  
THE MARKER BALLS SHALL BE DEFECTORY BY STANDARD METAL FITTING EQUIPMENT AND SHALL BE MANUFACTURED BY TEMPO OR 3M LOGATOR SYSTEM OR EQUIVALENT (FREQUENCY 121.6 KHZ.)  
2. FOR LARGE DIAMETER PIPE INSTALLED AT DEPTHS BELOW 4'-0" MARKER BALLS SHALL BE PLACED AT A MINIMUM DEPTH OF 4'-0" BELOW GRADE.

SEWER PIPE IDENTIFICATION

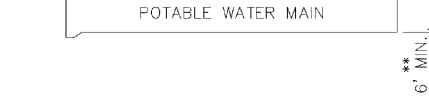
ENGINEERING STANDARDS 2022			
REVISIONS	BY	DATE	DESCRIPTION
BY DATE	ENGINEERING DIVISION		SEWER PIPE IDENTIFICATION
S.S. 06/23/22	CITY OF POMPAÑO BEACH		
S.S. 06/23/22			
SCALE: N.T.S.		DATE: JUNE 2022	DWG. NO. 207-1



A MINIMUM HORIZONTAL SEPARATION 3' (OUTSIDE TO OUTSIDE) SHALL BE MAINTAINED BETWEEN POTABLE WATER MAINS AND STORMWATER SEWERS, STORMWATER FORCE MAINS AND REGULATED REUSE WATER MAINS.



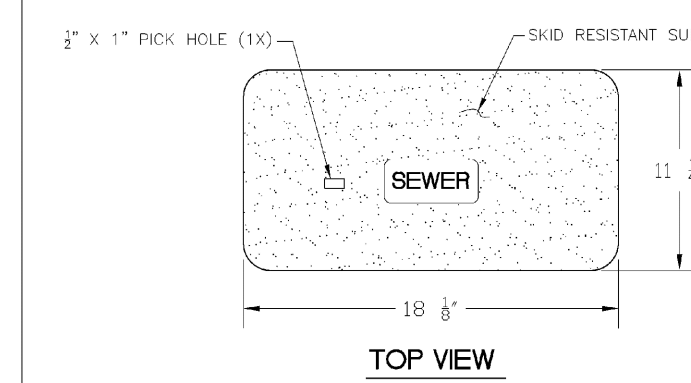
A MINIMUM HORIZONTAL SEPARATION 3' (OUTSIDE TO OUTSIDE) SHALL BE MAINTAINED BETWEEN EXISTING OR PROPOSED VACUUM-TYPE SANITARY SEWER, POTABLE WATER MAIN OR NOT REGULATED REUSE WATER MAIN. \*\* SEE NOTE D(1)(B).



A MINIMUM HORIZONTAL SEPARATION OF 6' (OUTSIDE TO OUTSIDE) SHALL BE MAINTAINED BETWEEN POTABLE MAINS AND EXISTING OR PROPOSED GRAVITY-OR PRESSURE-TYPE SANITARY SEWER, WASTEWATER FORCE MAIN OR NOT REGULATED REUSE WATER MAIN. \*\* SEE NOTE D(1)(C).

MINIMUM HORIZONTAL SEPARATION REQUIREMENTS FOR POTABLE WATER, REUSE, STORMWATER AND SEWER LINES

ENGINEERING STANDARDS 2022			
REVISIONS	BY	DATE	DESCRIPTION
BY DATE	ENGINEERING DIVISION		MIN. HORIZONTAL SEPARATION FOR SANITARY SEWER
S.S. 06/23/22	CITY OF POMPAÑO BEACH		
S.S. 06/23/22			
SCALE: N.T.S.		DATE: JUNE 2022	DWG. NO. 209-1

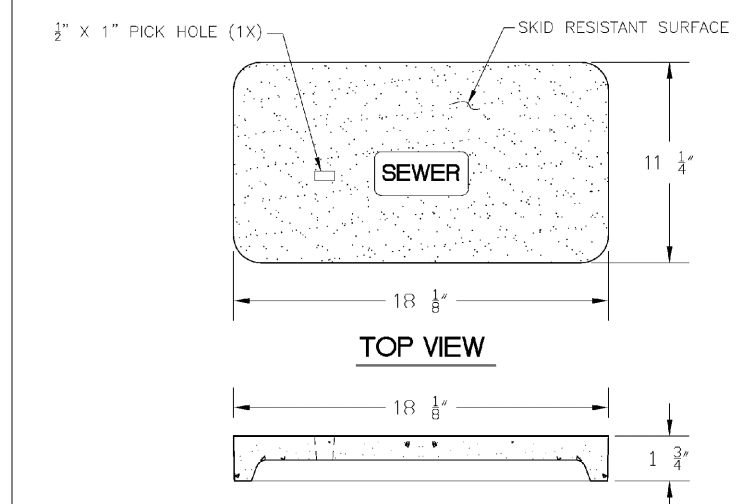


NOTE  
1. MATERIAL: FIBERGLASS REINFORCED POLYMER CONCRETE & FIBERGLASS REINFORCED POLYMER  
2. CO. OR. GREEN  
3. LOAD RATING: AS (ASTM C857)  
4. LOAD: SEWER

SEWER BOX AND COVER

PRODUCT RATING - NON TRAFFIC			
LOAD DESIGNATION	DESCRIPTION	DESIGN LOADS (LIVE & IMPACT) (LBS/FT <sup>2</sup> )	TESTING (LIVE & IMPACT) (LBS/FT <sup>2</sup> )
AASHTO H10	MEDIUM TRUCK TRAFFIC	8,000	22,568 (4)

ENGINEERING STANDARDS 2022			
REVISIONS	BY	DATE	DESCRIPTION
BY DATE	ENGINEERING DIVISION		SEWER BOX AND COVER
S.S. JUNE 2022	CITY OF POMPAÑO BEACH		CDR Part No. WB03-11B-12
S.S. 06/23/22			CDR Part No. WC02-11B-02
SCALE: N.T.S.		DATE: JUNE 2022	DWG. NO. 210-1

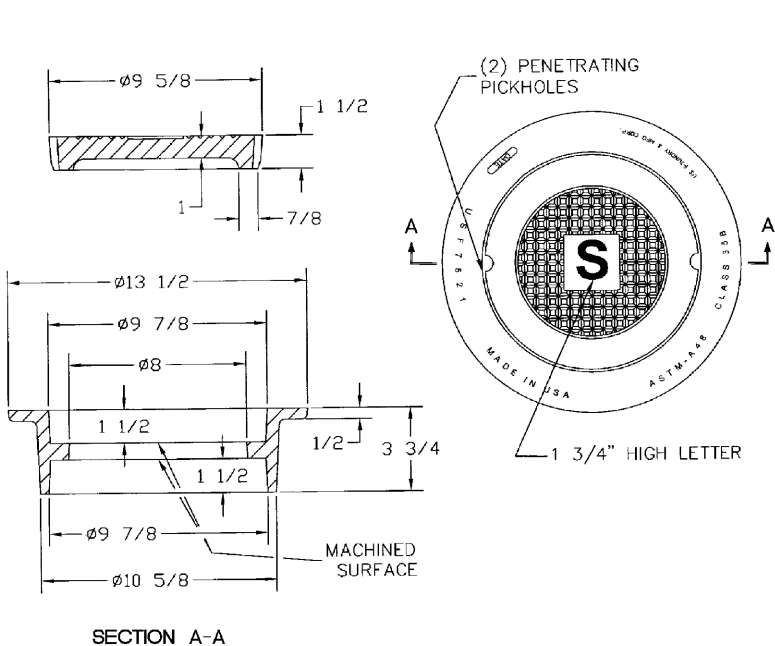


NOTE  
1. MATERIAL: FIBERGLASS REINFORCED POLYMER CONCRETE & FIBERGLASS REINFORCED POLYMER  
2. CO. OR. GREEN  
3. LOAD RATING: AS (ASTM C857)  
4. LOAD: SEWER

SEWER BOX AND COVER

PRODUCT RATING - TRAFFIC			
LOAD DESIGNATION	DESCRIPTION	DESIGN LOADS (LIVE & IMPACT) (LBS/FT <sup>2</sup> )	TESTING (LIVE & IMPACT) (LBS/FT <sup>2</sup> )
AASHTO H15	MEDIUM TRUCK TRAFFIC	12,000	27,000 (5)

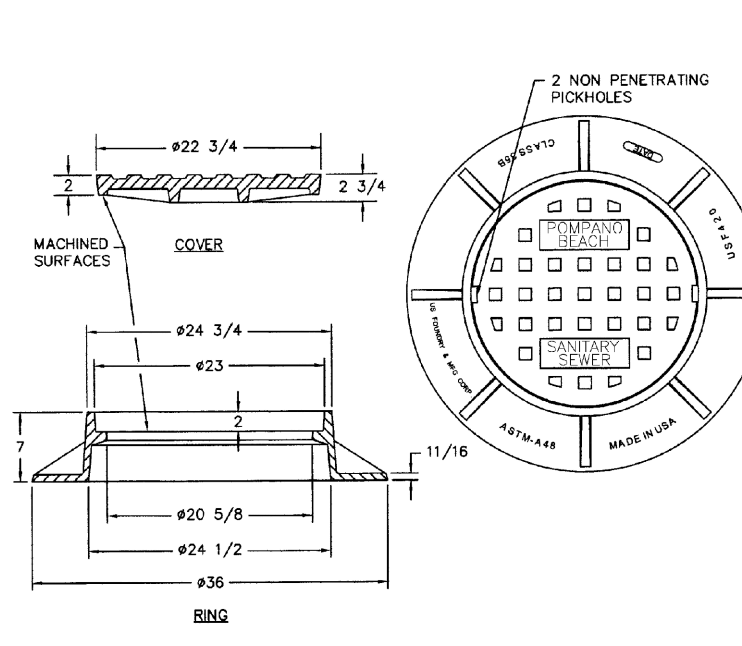
ENGINEERING STANDARDS 2022			
REVISIONS	BY	DATE	DESCRIPTION
BY DATE	ENGINEERING DIVISION		SEWER BOX AND COVER
S.S. JUNE 2022	CITY OF POMPAÑO BEACH		CDR Part No. WB03-11B-12
S.S. 06/23/22			CDR Part No. WC02-11B-02
SCALE: N.T.S.		DATE: JUNE 2022	DWG. NO. 210-2



NOTE  
MATERIAL: Gray Cast Iron  
ASTM-A48 Class 35B

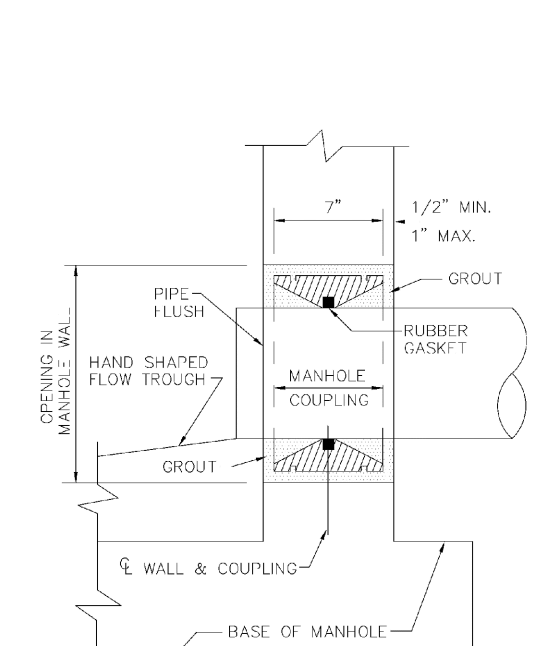
SEWER BOX AND COVER - HEAVY TRAFFIC

ENGINEERING STANDARDS 2022			
REVISIONS	BY	DATE	DESCRIPTION
BY DATE	ENGINEERING DIVISION		SEWER BOX AND COVER
S.S. 06/23/22	CITY OF POMPAÑO BEACH		HEAVY TRAFFIC
S.S. 06/23/22			
SCALE: N.T.S.		DATE: JUNE 2022	DWG. NO. 210-3



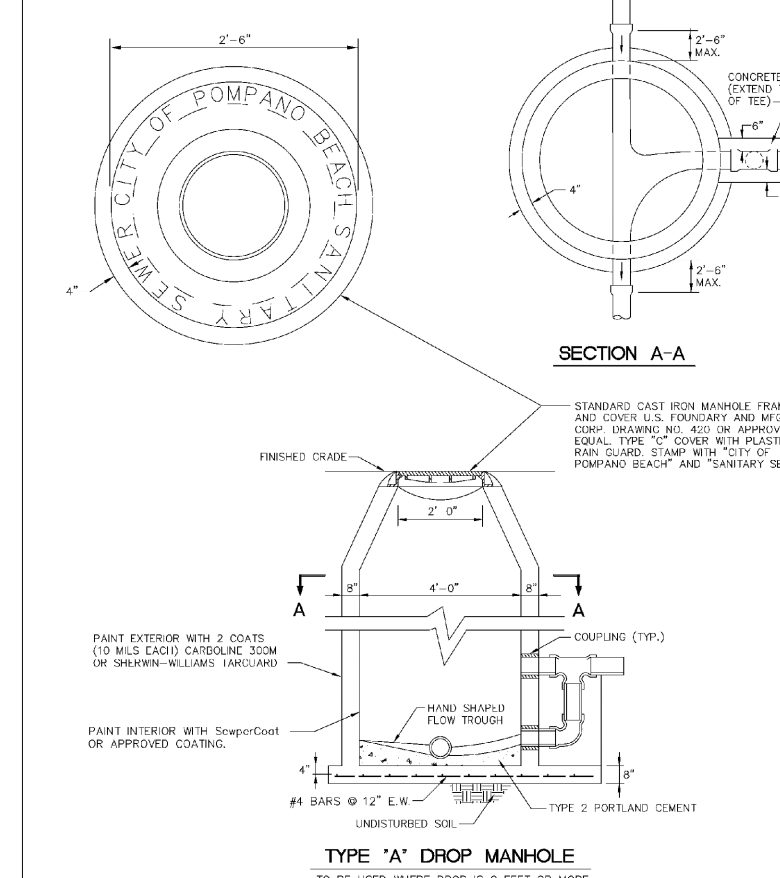
TRAFFIC RATED FRAME & COVER

ENGINEERING STANDARDS 2022			
REVISIONS	BY	DATE	DESCRIPTION
BY DATE	ENGINEERING DIVISION		TRAFFIC RATED SEWER COVER
S.S. JUNE 2022	CITY OF POMPAÑO BEACH		
S.S. 06/23/22			
SCALE: N.T.S.		DATE: JUNE 2022	DWG. NO. 211-1



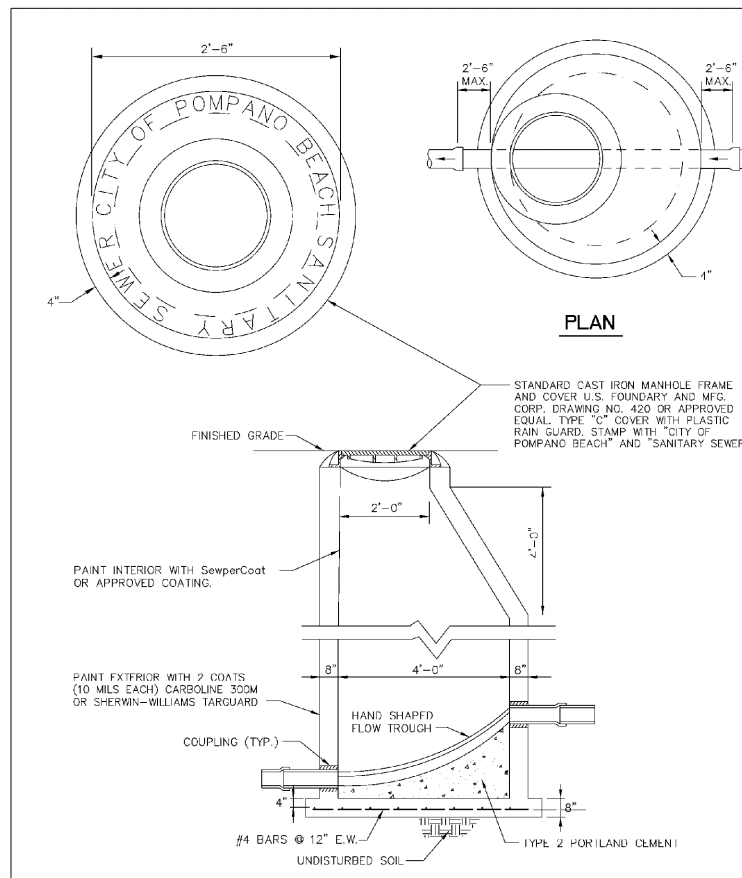
MANHOLE COUPLING

ENGINEERING STANDARDS 2022			
REVISIONS	BY	DATE	DESCRIPTION
BY DATE	ENGINEERING DIVISION		MANHOLE COUPLING
S.S. JUNE 2022	CITY OF POMPAÑO BEACH		
S.S. 06/23/22			
SCALE: N.T.S.		DATE: JUNE 2022	DWG. NO. 212-1



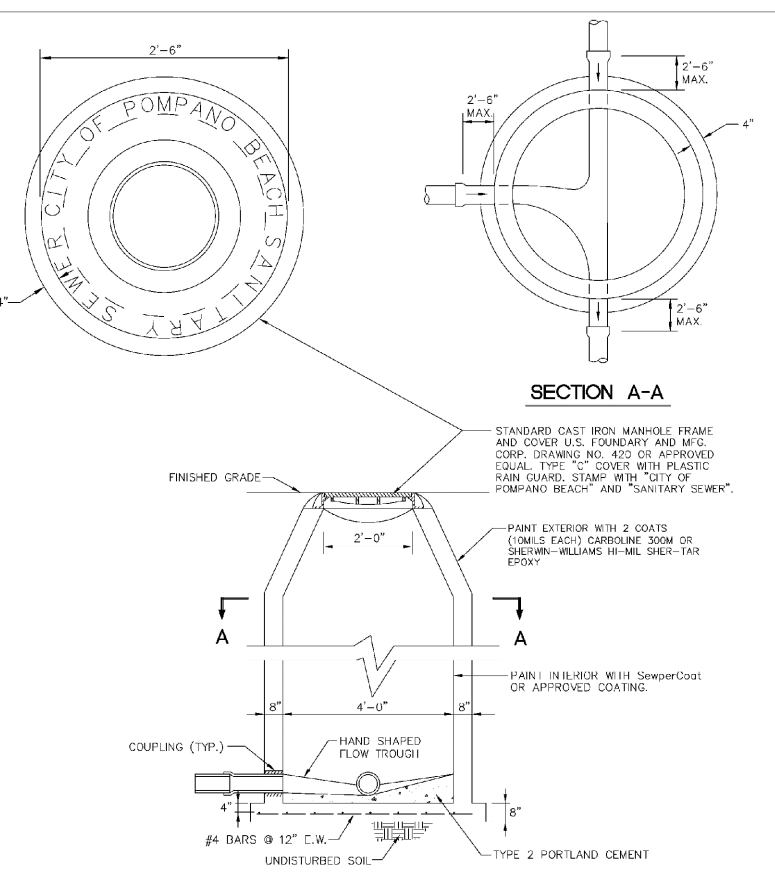
TYPE 'A' DROP MANHOLE

ENGINEERING STANDARDS 2022			
REVISIONS	BY	DATE	DESCRIPTION
BY DATE	ENGINEERING DIVISION		TYPE 'A' DROP MANHOLE
S.S. JUNE 2022	CITY OF POMPAÑO BEACH		
S.S. 06/23/22			
SCALE: N.T.S.		DATE: JUNE 2022	DWG. NO. 213-1



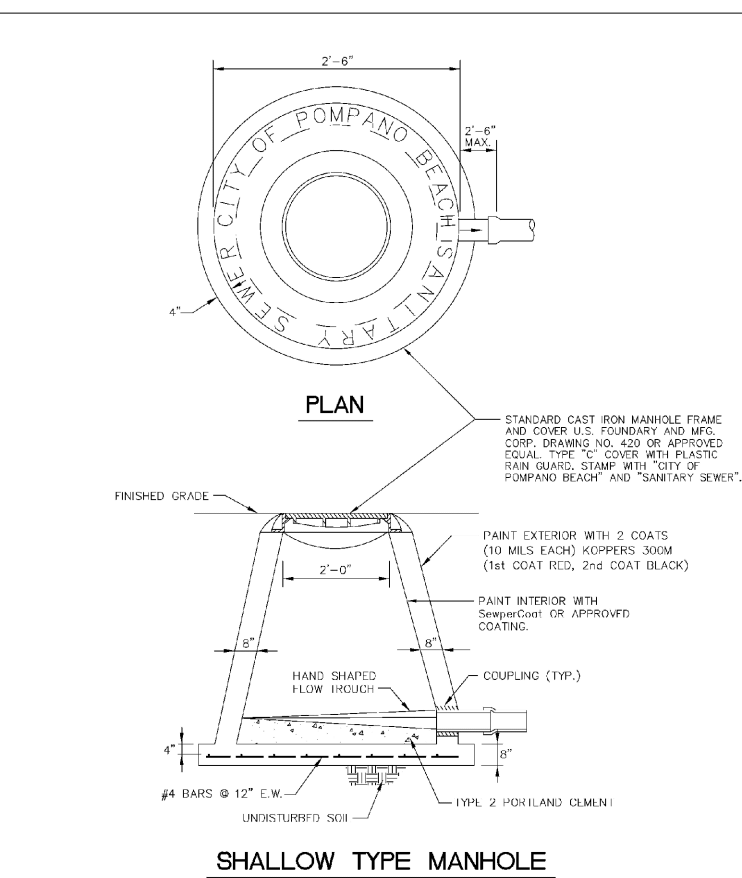
TYPE 'B' DROP MANHOLE

ENGINEERING STANDARDS 2022			
REVISIONS	BY	DATE	DESCRIPTION
BY DATE	ENGINEERING DIVISION		TYPE 'B' DROP MANHOLE
S.S. JUNE 2022	CITY OF POMPAÑO BEACH		
S.S. 06/23/22			
SCALE: N.T.S.		DATE: JUNE 2022	DWG. NO. 214-1



STANDARD MANHOLE

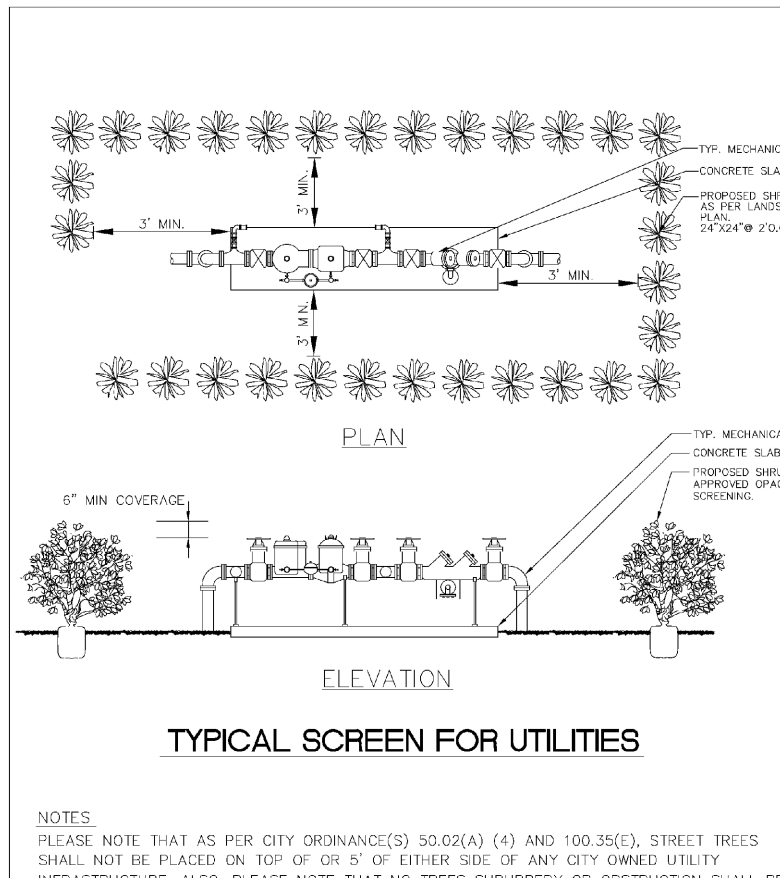
ENGINEERING STANDARDS 2022			
REVISIONS	BY	DATE	DESCRIPTION
BY DATE	ENGINEERING DIVISION		STANDARD MANHOLE
S.S. JUNE 2022	CITY OF POMPAÑO BEACH		
S.S. 06/23/22			
SCALE: N.T.S.		DATE: JUNE 2022	DWG. NO. 215-1



SHALLOW TYPE MANHOLE

ENGINEERING STANDARDS 2022			
REVISIONS	BY	DATE	DESCRIPTION
BY DATE	ENGINEERING DIVISION		SHALLOW TYPE MANHOLE
S.S. JUNE 2022	CITY OF POMPAÑO BEACH		
S.S. 06/23/22			
SCALE: N.T.S.		DATE: JUNE 2022	DWG. NO. 216-1

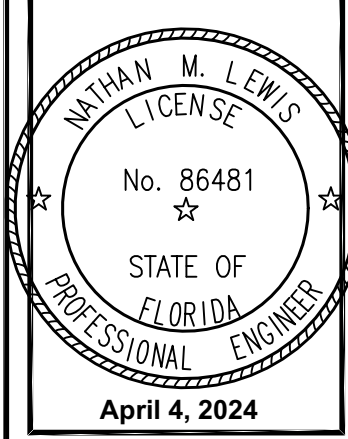
Step  
hen  
Botek  
Digitally signed by Stephen Botek  
Date: 2024.04.04 09:02:04 -04'00'



TYPICAL SCREEN FOR UTILITIES

ENGINEERING STANDARDS 2022			
REVISIONS	BY	DATE	DESCRIPTION
BY DATE	ENGINEERING DIVISION		TYPICAL SCREEN FOR UTILITIES
S.S. JUNE 2022	CITY OF POMPAÑO BEACH		
S.S. 06/23/22			
SCALE: N.T.S.		DATE: JUNE 2022	DWG. NO. 315-1

BTE REF DATE: 00.00.00			
REVISIONS	DATE	#	



THIS DOCUMENT HAS BEEN DIGITALLY SIGNED AND SEALED BY NATHAN M. LEWIS, P.E. ON THE DATE ADJACENT TO THE SEAL.  
PRINTED COPIES OF THIS DOCUMENT ARE NOT CONSIDERED SIGNED AND SEALED AND THE SIGNATURE MUST BE VERIFIED ON ANY ELECTRONIC COPIES.

Celebrating 15 Years

WATER AND SANITARY SEWER DETAILS  
580 BRINY  
580 Briny Ave  
Pompano Beach, FL 33062

Botek Thurlow Engineering, Inc.  
3400 NW 9th Avenue, Suite 102, Ft. Lauderdale, FL 33309  
www.botekthurlow-eng.com p: 954-568-8888 F: 954-568-0757

BTE PROJECT #  
22-0804

PROJECT DATE:  
10-23-22

3-2.3

PZ24-12000003  
05/15/2024